

JUXTA W Series

Model : WH0V

General Specifications

Output Isolator

JUXTA

1. GENERAL

This isolator, converts 1~5V DC signals to voltage signals.

2. SPECIFICATIONS

IO Specifications	
Input signal	1~5V DC
Input resistance	1M Ω (100k Ω when power off)
Permissible applied voltage	\pm 30V DC max
Output signal	Voltage signal
Zero point adjustment range	\pm 1% of span
Span adjustment range	\pm 5% of span
Standard performance	
Precision rating	\pm 0.1% of span
Response speed	150ms 63% response (10~90%)
Insulation resistance	100M Ω min (at 500V DC) between input~output~power supply (DC drive) input~output~power supply~ground (AC drive)
Voltage withstand	1500V AC/minute between input~output, input~power supply 500V AC/minute between output~power supply (DC drive) 1500V AC/minute between input~output~power supply~ground (AC drive)
Ambient temperature and humidity	Normal operating condition: 0~50°C, 5~90% RH Operating limit: -10~60°C, 5~95% RH Storage condition: -40~70°C, 5~95% RH (no condensation)
Power supply voltage	85~264V AC 47~63Hz, 24V DC \pm 10%
Effect of power supply voltage fluctuation	\pm 0.1% max of span per 85~264V AC or 24V DC \pm 10% fluctuation
Effect of change in ambient temperature	\pm 0.2% max of span per 10°C change in temperature
Current dissipation	24V DC 50mA (WH0V-1)
Power dissipation	100V AC 5VA (WH0V-2)
Mountings and dimensions	
Material	Case: ABS plastic
Boards	Both sides glass-epoxy
Mounting methods	Rack, wall, or DIN rail
Connection method	M4-screw terminals
External dimensions	72 x 48 x 127 mm (h x w x d)
Weight	DC drive: approx. 150g, AC drive : approx. 300g
Accessories	
Tag number labels:	1
Mounting blocks:	2
M4 mounting screws:	4

WH0V-□□-□ * B

TYPE NO.

OUTPUT SPECIFICATION

V: Voltage

INPUT SIGNAL

6: 1~5V DC

OUTPUT SIGNAL

1: 0~10mV DC

2: 0~100mV DC

3: 0~1V DC

4: 0~10V DC

5: 0~5V DC

6: 1~5V DC

0: (custom) voltage signal

0~10V DC

POWER SUPPLY

1: 24V DC±10% 2: 85~264V AC

High Voltage Withstand Specifications

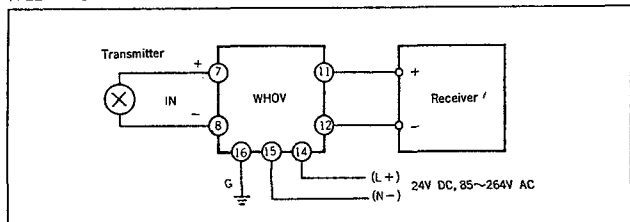
The JUXTA W Series is also available in 2000V AC voltage withstand specifications. Contact your dealer for details.

OUTPUT RESISTANCE AND PERMISSIBLE LOAD RESISTANCE

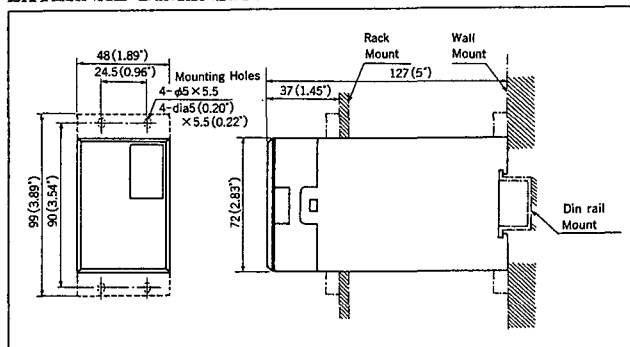
WH0V (DC Voltage Output)			
Output Signal	Output Resistance	Permissible Load Resistance	
0~10mV DC	100Ω max	250kΩ min	
0~100mV DC			
0~1V DC	1Ω max	2kΩ min	
0~10V DC		10kΩ min	
0~5V DC		2kΩ min	
1~5V DC		2kΩ min	
-10~+10V DC		10kΩ min	
Others where V ₁₀₀ =10V max		V ₁₀₀ ≤ 100mV	100Ω max
	V ₁₀₀ > 100mV	1Ω max	10kΩ min

V₁₀₀ : 100% output voltage

WIRING DIAGRAM



EXTERNAL DIMENSION



Subject to change without notice for grade up quality and performance